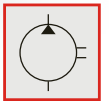
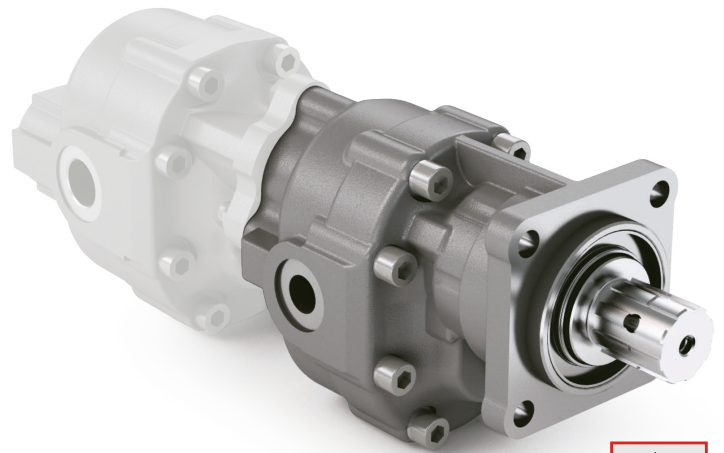
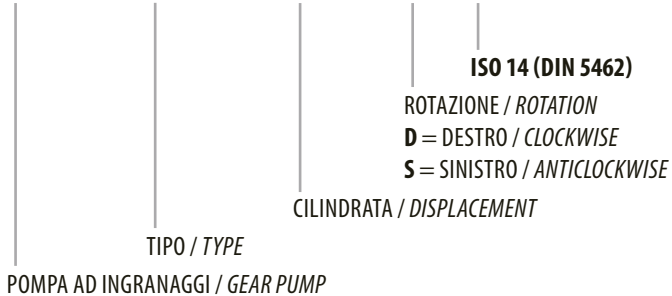


## TANDEM ISO 14 (DIN 5462)

CODICE DI ORDINAZIONE / ORDERING CODE

### 200 FZO XXX X V

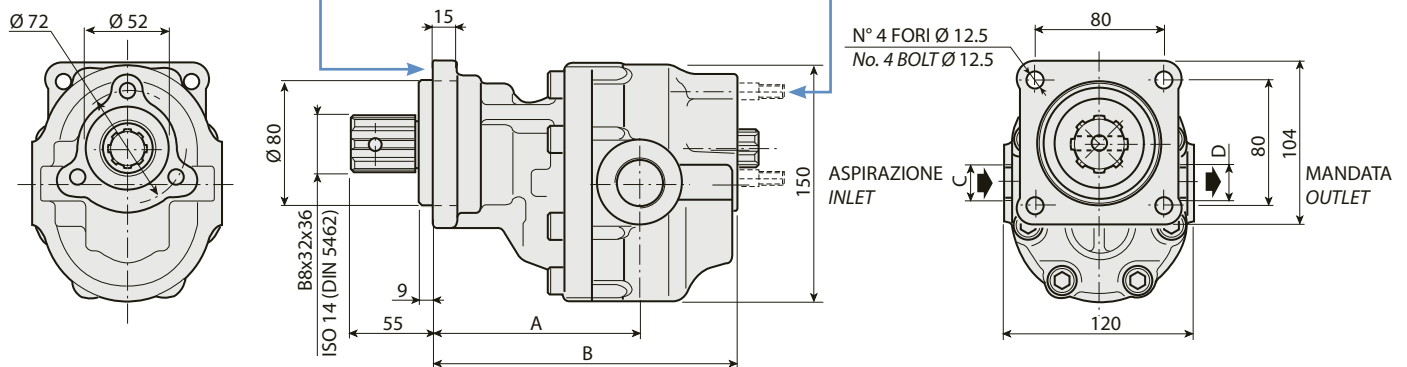


1

<b>FZO 22 V</b>	<b>FZO 36 V</b>	<b>FZO 57 V</b>	<b>FZO 90 V</b>
<b>FZO 27 V</b>	<b>FZO 43 V</b>	<b>FZO 65 V</b>	<b>FZO 110 V</b>

KIT ACCOPPIAMENTO  
COUPLING KIT  
**198KPP04000**

KIT ACCOPPIAMENTO POSTERIORE: per pompa ad ingranaggi tipo REAR MOUNTING KIT: for gear pump type	<b>FZO</b>	<b>198KPP02000</b>
	<b>BPS</b>	<b>198KPP03000</b>



### CARATTERISTICHE E DATI TECNICI / SPECIFICATIONS AND TECHNICAL DATA

TIPO TYPE	CODICE / CODE		CILINDRATA DISPLACEMENT cm <sup>3</sup> /rev.	A mm	B mm	C ASPIRAZIONE INLET	D MANDATA OUTLET	PESO WEIGHT kg
	ROTAZIONE DESTRA CLOCKWISE ROT.	ROTAZIONE SINISTRA ANTICLOCKWISE ROT.						
<b>FZO 22 V</b>	<b>200FZ0022DV</b>	<b>200FZ0022SV</b>	22	126	176.5	3/4" G	1/2" G	11.1
<b>FZO 27 V</b>	<b>200FZ0027DV</b>	<b>200FZ0027SV</b>	27	125	180	3/4" G	1/2" G	11.5
<b>FZO 36 V</b>	<b>200FZ0036DV</b>	<b>200FZ0036SV</b>	36	126	186.5	3/4" G	1/2" G	12.2
<b>FZO 43 V</b>	<b>200FZ0043DV</b>	<b>200FZ0043SV</b>	43	131	191.5	1" G	3/4" G	12.6
<b>FZO 57 V</b>	<b>200FZ0057DV</b>	<b>200FZ0057SV</b>	57	138	201.5	1" G	3/4" G	13.4
<b>FZO 65 V</b>	<b>200FZ0065DV</b>	<b>200FZ0065SV</b>	65	143	206.5	1" G	3/4" G	13.9
<b>FZO 90 V</b>	<b>200FZ0090DV</b>	<b>200FZ0090SV</b>	84	152.5	221.5	1" 1/4 G	1" G	14.9
<b>FZO 110 V</b>	<b>200FZ0110DV</b>	<b>200FZ0110SV</b>	105	164.5	233.5	1" 1/4 G	1" G	16.4

KIT RASAMENTI / THRUST PLATES KIT CODICE / CODE 20601800000

KIT GUARNIZIONI COMPLETO / COMPLETE SEALS KIT CODICE / CODE 21902200000

Per la scelta dei raccordi orientabili vedi pag. 214-215 / For the selection of adjustable fittings see page 214-215

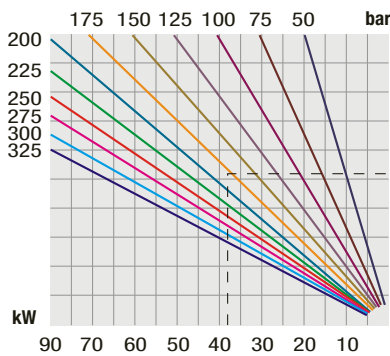
- A richiesta possono essere fornite le pompe ad ingranaggi con le guarnizioni HNBR per climi freddi (-40 °C).
- On request our gear pumps may be supplied with HNBR seals for cold climates (-40 °C).

## TANDEM ISO 14 (DIN 5462)

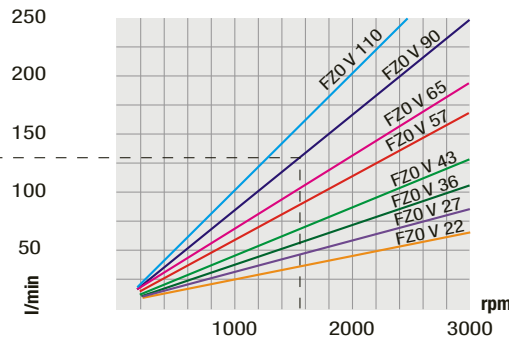
TIPO / TYPE		FZO 22 V FZO 27 V FZO 36 V FZO 43 V FZO 57 V FZO 65 V FZO 90 V FZO 110 V								
Cilindrata Displacement	Vg	cm <sup>3</sup> /n cm <sup>3</sup> /rev.	22	27	36	43	57	65	84	105
Pressione massima continua Max continuous operating pressure	P1	bar	305	300	300	280	240	220	210	180
Pressione massima intermittente (max 30 s) Max intermittent operating pressure	P2		330	325	325	305	265	240	230	200
Pressione massima di picco (≤ 0.1 s) Max peak pressure	P3		450	450	450	400	380	350	300	250
Velocità massima intermittente (P ≤ 20 bar) Max intermittent speed	n3	n/min r.p.m.	4000	3500	3500	3500	3500	3500	3500	3000
Velocità massima continua (≤ P1) Max continuous speed	n1		2500	2200	2200	2200	2000	1800	1500	1500
Velocità minima intermittente (≤ P2 x 0.5) (max 30 s) Min intermittent speed	n4		450	350	350	350	300	300	300	300

### DIAGRAMMI / DIAGRAMS

**POTENZA ASSORBITA**  
**POWER INPUT**

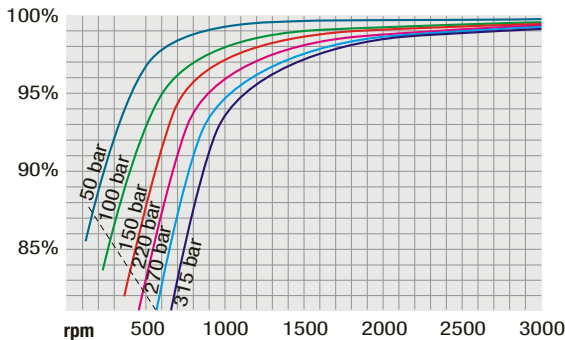


**PORTATA**  
**CAPACITY**

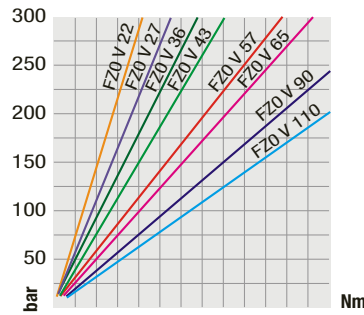


RILIEVI ESEGUITI CON OLIO ISO VG 46  
A 50° C ( $\nu = 30$  cSt)  
THE ABOVE SPECIFICATIONS REFER TO OIL  
TYPE ISO VG 46 AT 50° C ( $\nu = 30$  cSt)

**RENDIMENTO VOLUMETRICO**  
**VOLUMETRIC EFFICIENCY**



**COPPIA ASSORBITA**  
**DRIVE TORQUE**



Verificare, nel caso vi sia l'utilizzo contemporaneo delle due pompe, che la coppia sull'albero in uscita non superi i 270 Nm.

*In case of simultaneous use of both pumps, make sure that the torque on output shaft does not exceed 270 Nm.*