



BIDIREZIONALE
BI-ROTATIONAL

BPM

Pompa ad Ingranaggi
Gear Pump

CODICE DI ORDINAZIONE / ORDERING CODE

200 **BPM** 036 0 S

DIN
5 4 6 2
SE

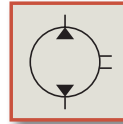
BPM 36
BPM 43
BPM 56
BPM 65
BPM 80
BPM 100

DIN 5462

CILINDRATA/DISPLACEMENT

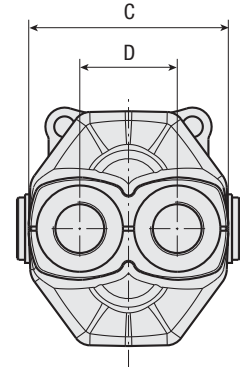
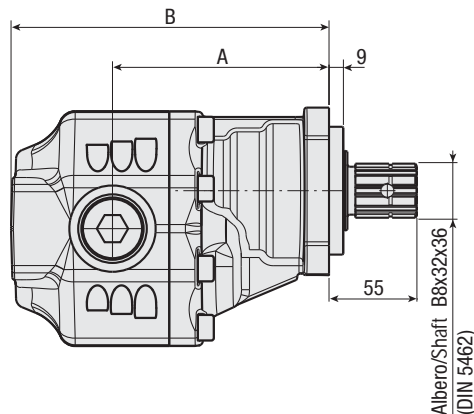
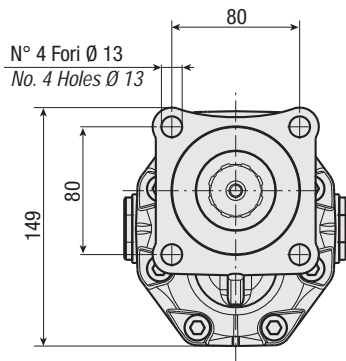
TIPO/TYPE

POMPA AD INGRANAGGI/GEAR PUMP



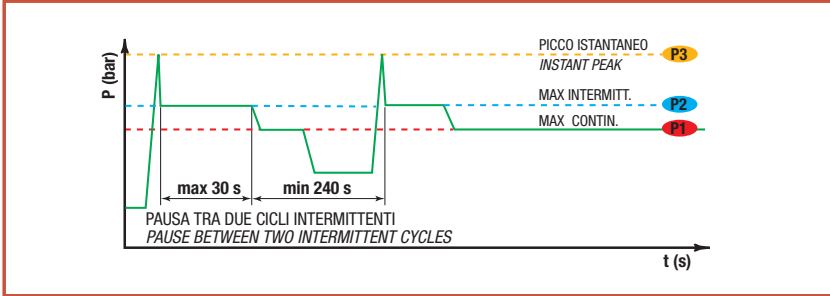
CARATTERISTICHE E DATI TECNICI / SPECIFICATIONS AND TECHNICAL DATA

TIPO TYPE	CODICE CODE	CILINDRATA DISPLACEMENT cm ³ /rev.	A mm	B mm	C mm	D mm	ASPIRAZIONE INLET	MANDATA OUTLET	PESO WEIGHT kg
BPM 36	200BPM0360S	36	129	185	125	61	3/4" G	3/4" G	13
BPM 43	200BPM0430S	43	131,5	191	125	61	3/4" G	3/4" G	13,4
BPM 56	200BPM0560S	56	135,5	198,5	125	61	1" G	1" G	14
BPM 65	200BPM0650S	65	141	204	125	61	1" G	1" G	14,8
BPM 80	200BPM0800S	84	141	216	140	70	1" 1/4 G	1" 1/4 G	15,6
BPM 100	200BPM10000	100	147	222	140	70	1" 1/4 G	1" 1/4 G	16,2



DATI TECNICI / TECHNICAL DATA

ESEMPIO CICLI LAVORO / EXAMPLE OF WORKING CYCLES



Pressione d'aspirazione: Inlet pressure:	0.7 ÷ 1.5 bar (assoluti/absolute)
Campo viscosità lavoro: Operating viscosity range:	12 ÷ 100 cSt
Temperatura fluido °C (t): Fluid temperature °C (t):	-10° + 80° C

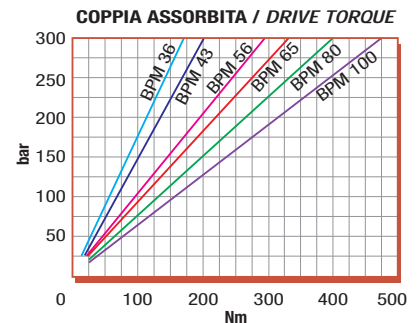
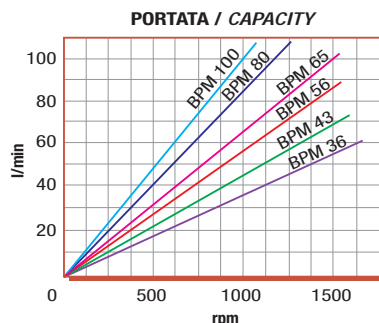
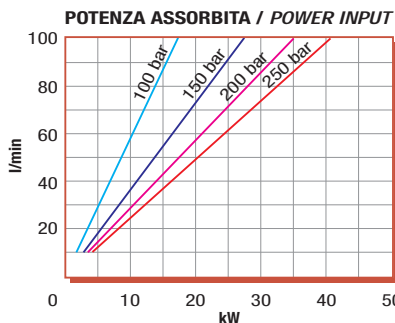
Pressione Lavoro Working Press. P2	Contaminazione / Contamination		Filtro / Filter βx = 75
	NAS 1638	ISO 4406	
≤ 200 bar	12	21/18	40 μm
≥ 200 bar	11	20/17	25 μm

◀ **FILTRAZIONE CONSIGLIATA (ritorno o mandata)**
RECOMMENDED FILTERING (return or outlet)

TIPO / TYPE		BPM36	BPM43	BPM56	BPM65	BPM80	BPM100
Cilindrata Displacement	Vg cm ³ /n cm ³ /rev.	36	43	56	65	84	100
Pressione massima continua Max continuous operating pressure	P1	230	230	220	200	180	160
Pressione massima intermittente Max intermitt. operat. press.	(max 30 s) P2	240	240	230	210	200	180
Pressione massima di picco Max peak pressure	(≤ 0.1 s) P3	250	250	240	220	210	190
Velocità massima intermittente Max intermittent speed	(P ≤ 20 bar) n3	2100	2100	1800	1800	1700	1700
Velocità massima continua Max continuous speed	(≤ P1) n1	1700	1700	1500	1500	1400	1400
Velocità minima intermittente Min intermittent speed	(≤ P2 x 0.5) (max 30 s) n4	400	400	300	300	300	300

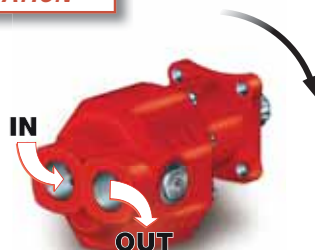
DIAGRAMMI / DIAGRAMS

RILIEVI ESEGUITI CON OLIO ISO VG 46 A 50° C (ν = 30 cSt)
 THE ABOVE SPECIFICATIONS REFER TO OIL TYPE ISO VG 46 AT 50° C (ν = 30 cSt)



ROTAZIONE POMPA / PUMP ROTATION

**SINISTRA
ANTI-CLOCKWISE**



**DESTRA
CLOCKWISE**

