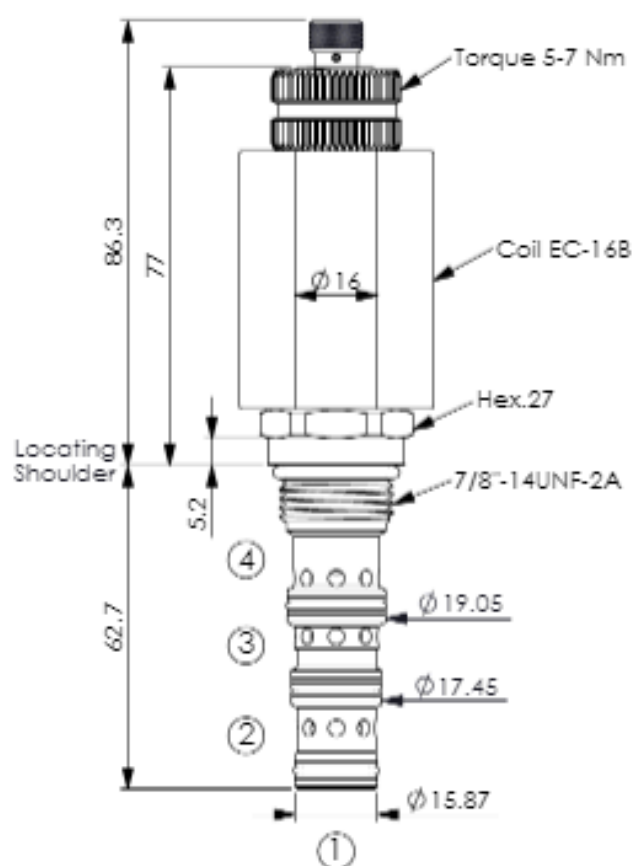
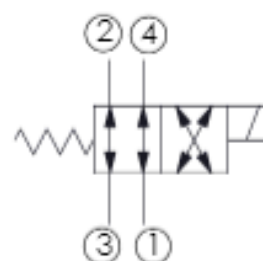


Ordering Code: **ES-10W-X-Y-Z-04**



UNIT:mm



TECHNICAL DATA

Rated pressure:	350	bar
Rated flow:	25	l/min
Cavity-Tooling:	10W-4	
Installation torque:	44-56	Nm
Weight:	0.29	kg
Fluids-Temperatures:	-40 to 120	°C

Internal Leakage: 80cc/minute

max.at 210 bar with 46 cSt oil

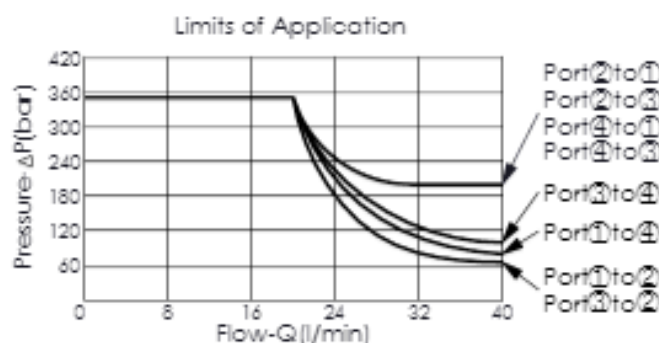
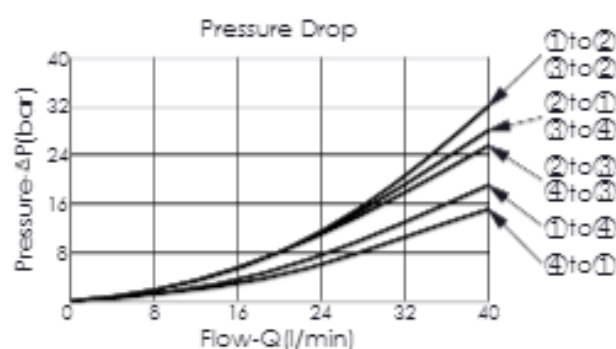
Filtration: 25 μ m nominal or better

Minimum Voltage Required:

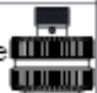
90 % of nominal

Coils must be ordered separately

Mounting Position: unrestricted



Rev.170117

X	STRUCTURE	
4C	4 Ports - 26 Watt. Coil	ϕ 16 mm tube
Y	OPERATION	
10	Spool 4-Way 2-Position	
Z	OPTIONS	
N	Non-adjustable	
M	Screw-out Knob Style	

E.410.1