

WET KIT ASSEMBLY

HYDRAULIC TIPPER UNIT

KIT REF.N

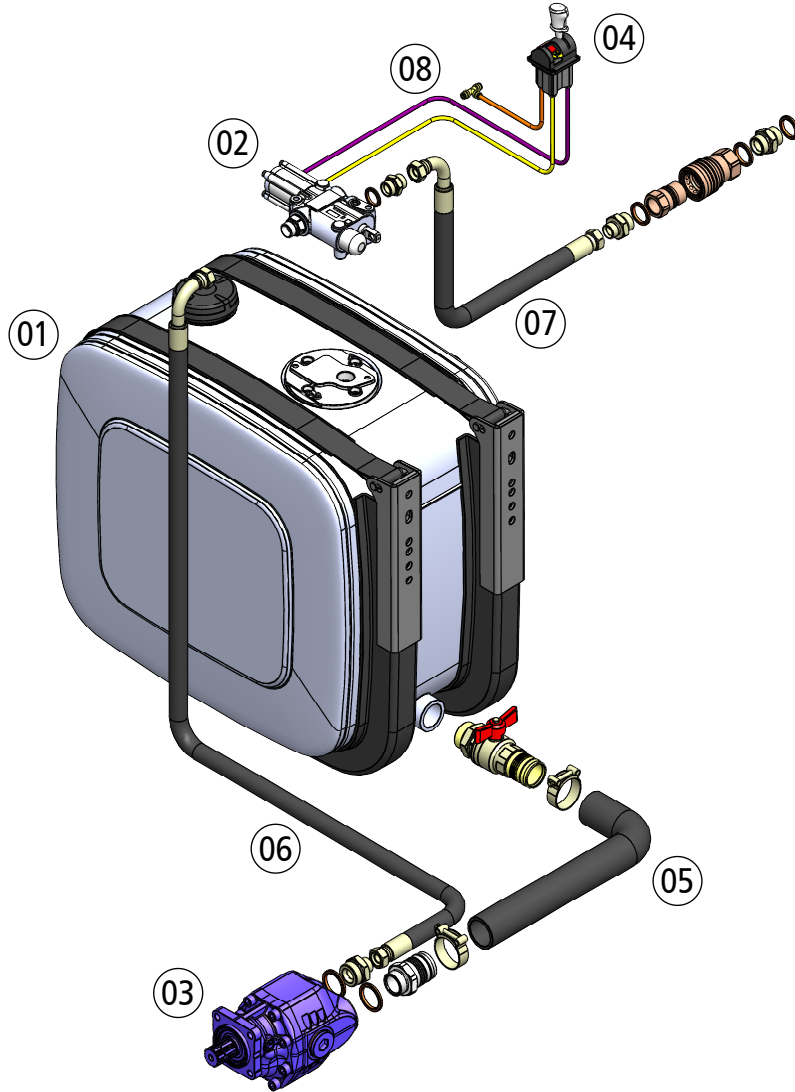
MAX PRESSURE

K2170108407000

TRUCK/TRAILER

KIT SPL170 BPM80 DM140

170 bar



QTA17B80G0000

MAIN COMPONENTS LIST

QHBKKY0110000

POS. DESCRIPTION

- 01 Oil tank - side mounted 170 litres**
- 02 Hydraulic distributor, DM140, max. 170 bar**
- 03 Gear pump, 84 cc displacement, bi-rotational, 4 holes**
- 04 Pneumatic control, tristable lever**

POS. DESCRIPTION

- 05 Hose R4 Ø51mm L=2000mm**
- 06 Hose TTRK250 G3/4" FD-F90 L=2000mm**
- 07 Hose TTRK250 G3/4" FD-F90 L=4000mm**
- 08 Rilsan hose 6x4, L=25m**

TECHNICAL NOTES AND SPECIFICATIONS

The above wet kit is an aggregate of hydraulic components and devices. They have been selected to be installed into a machinery to operate one or more actuators. The most common applications are dumpers and their secondary equipments or handling equipments for things such as loading cranes, hook lifters, skip loaders, moving floors etc. Components included in the above wet kit are not for continuous working if not differently specified. They are not suitable for potentially explosive atmosphere or environment with risk of fire. They are not suitable to be installed on equipments to lift people.

The above wet kit has been sized for the cylinder of reference so different cylinders with similar oil consumption, can be operated by means of the above wet kit. The above parts list is reporting just the wet kit main components. For a detailed bill of material, please ask to our Sales Department.

Where existing, it is prohibited to tamper the original setting of the relief valve on tipping valves or distributors. **Important:** the relief valve must not be intended as an alternative of safety valves which must be treated as a separate device to be included in the machinery.

Always check correct rotation sense of the pump prior to install it on the Power Take Off.

Avoid elbows and restrictions on the hoses if not included in the above hydraulic scheme.

It is recommended to check periodically cleanliness of oil and filter. Replace filters at least every six months.

Air supplying range for pneumatic components is between 3 and 8 bars with a maximum flow admitted of 0,5 Nlt/min. Working temperature range for hydraulic oil: from -10° to +80° C. Further specification available on the installation and maintenance manual.

REMARKS

[2024.05.20]

REVISIONS

01

02

DISTINTA BASE / BOM

K2170108407000 KIT TRATTORE SPL170 BPM80 DM140 20/05/2024				
LIVELLO LEVEL	CODICE CODE	DESCRIZIONE DESCRIPTION	UD	Q.TA' NETTA NET Q.TY
1.....	QHBKKY01100000	KIT-S2.0-P2.0-U4.0-A25 1TUBO	N.	1,00
.2.....	00401135000000	BONDED G 1"	N.	3,00
.2.....	00401157000000	BONDED G 3/4"	N.	1,00
.2.....	00401321000000	BONDED G 1"1/4	N.	2,00
.2.....	01300021000000	NIPLES M-M 3/4" - 1" G	N.	1,00
.2.....	01300022000000	NIPLES M-M G 1"	N.	1,00
.2.....	01300032000000	NIPLES M-M 3/4" G	N.	1,00
.2.....	01602D400CE000	TUBO WP280 SF4 G3/4" L4000 FD-F90 M	N.	1,00
.2.....	0160TD200CE000	HOSE-WP250-SF2.5-G3/4"-L2000-FD-F90	N.	1,00
.2.....	09900111000000	SUCTION HOSE D.51 mm L.2000	N.	1,00
.2.....	09900909000000	CLAMP D.51 - DE 60-63	N.	2,00
.2.....	09901042000000	NIPLES M-M 3/4"-1"1/4 G	N.	1,00
.2.....	099H0157000000	6X4 MM AIR PIPE, 25 MT BLACK	N.	1,00
.2.....	099H3529000000	KIT INNESTI RAPIDI G 1"	N.	1,00
.2.....	90011002102000	STRAIGHT SUCT.FITTING 1/4"D.51	N.	1,00
.2.....	905R900TTT0000	R9 TTT INTERMEDIATE FITTING	N.	1,00
1.....	QTA17B80G00000	KIT-DM140-170BAR-CP22-BPM 80	N.	1,00
.2.....	099013390R0000	COMPLETE OIL PLUG FOR TANK	N.	1,00
.2.....	20BPM0800S0000	BPM80 SE GEAR PUMP BIDIREZ.	N.	1,00
.2.....	299290000H0000	TANK MOUNTING KIT	N.	1,00
.2.....	30KFDS00300000	VALVE PLATE KIT + FILTER 60m	N.	1,00
.2.....	400C22S01000A0	NM3 T6 BLOCK UP-DOWN DIS.PTO	N.	1,00
.2.....	90021703100000	BALL VALVEE G 1"1/2 M-HOSE 51	N.	1,00
.2.....	D140P0017A50P0	DISTRIBUTOR DM140 170BAR P3/4"	N.	1,00
.2.....	SPLL170K000000	OIL TANK 170LT. G 1"1/2 F	N.	1,00
.2.....	STA6370A100000	TANK BRACKET KIT	N.	1,00
- F I N E -				

Interpump Hydraulics Spa a socio unico

Soggetta ad attività di Direzione e Coordinamento da parte di Interpump Group Spa

Sede Legale ed Operativa - Stabilimento 1: via A. Mingozzi, 6 • 40012 Calderara di Reno BO - Italy

T +39 051 6460511 • F +39 051 6460560 • info@iph.it • iph.it

N. Mecc. BO 056383 • R.E.A. BO 444225 • C.F. 00883010241 • P.Iva IT02128140361 • Cap. Soc. Euro 2.631.600,00 i.v.

Sede Operativa - Stabilimento 2: via Proventa, 31 • 48018 Faenza RA - Italy • T +39 0546 689000 • F +39 0546 664860 • R.E.A. RA 211275

A member of

