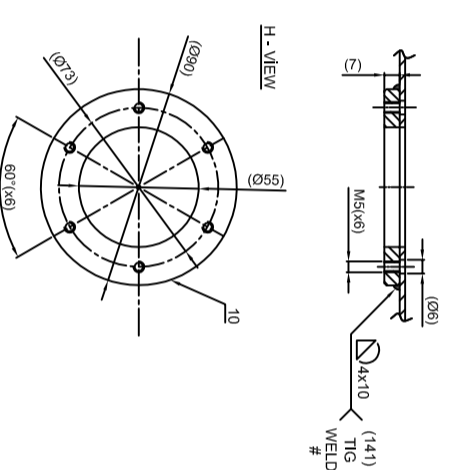
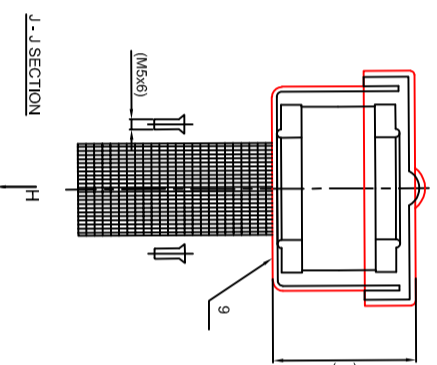
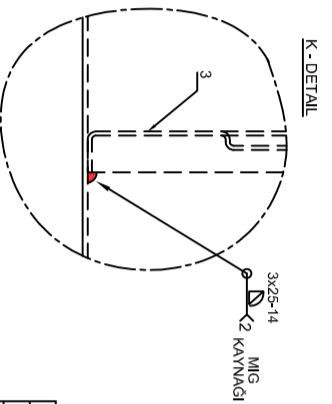
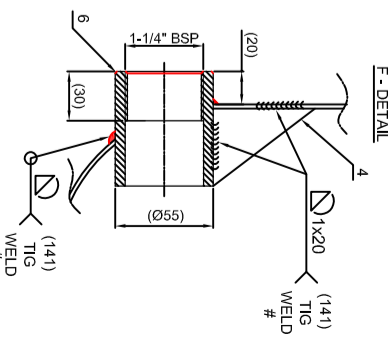
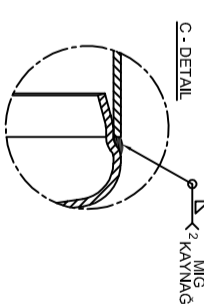
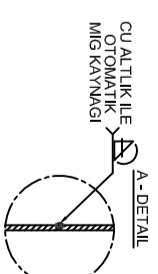
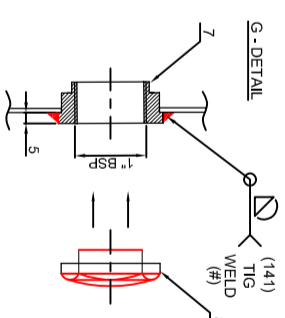
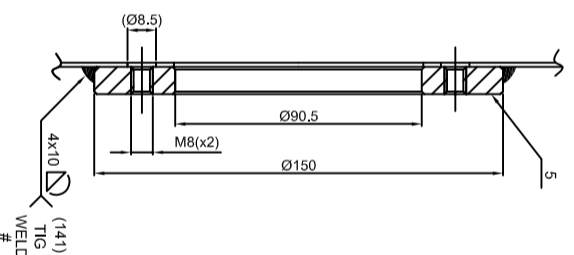


MARKING
- Volume
... / ... / ...



D-D SECTION



- NOT:**
- * GENERAL TOLERANCES FOR WELDED PARTS : TS EN ISO 13920-CH (DIN EN ISO 13920-CH)
 - * WELDS ARE SHOWN : TS EN ISO 2553 (DIN EN 22553)
 - * ACCEPTED WELD CRITERIAS : DIN EN ISO 10042
 - * PRESENTING NUMBER FOR METHODS OF WELDS AND SOLDER : TS EN ISO 4063 (DIN EN ISO 4063)
 - * WELDS TO BE CHECKED.
 - * INSIDE CLEANNESS SHALL BE CHECKED.
 - * IN TESTING AT 0.3 BAR, THERE MUST BE NO DISTORSION AND LEAKAGE.
 - * NUMBERS INSIDE (") ARE ONLY MEASUREMENTS FOR GUIDANCE
 - * ±7 mm DEFORMATION CAN BE ACCEPTED ON THE SURFACE OF THE TANK.

Poz.	Part Name	Part No	Piece	Drawing No	Thick	Wght
10	Ø90 FLANS	A06652	1	E 084 794 408	AlMg3	-
9	Ø90 FILLING PIPE CAP	A06653	1	E 084 794 509	-	-
8	1" BSP (G) SEVİYE GÖZETLEME CAMI	A06655	1	E 0...	-	-
7	1" BSP (G) MANSON	A08358	1	E 0...	AlMg3	-
6	1-1/4" BSP (G) MANSON	A06660	1	E 0...	EN AW-5754 (AlMg3)	-
5	Ø150 FLANS	A05885	1	E 001 789 107	AlMg3	-
4	DESTEK SACL	F0...	1	E 0...	EN AW-5754 (AlMg3)-2.5mm	-
3	PERDE	F03083	2	A 097 830 401	EN AW-5754 (AlMg3)-2mm	-
2	KAPAK	F06148	2	A 0...	EN AW-5754 (AlMg3)-2mm	-
1	GÖVDE	F0...	1	A 0...	EN AW-5754 (AlMg3)-2.5mm	-

DO NOT SCALE FROM DRAWING

Material
Undefinded Tolerance : DIN 6930m
Linear Dimensions : ±
Holes and Positions : ±
Angular Dimensions : ±

Tarih	İşim	İmza
27.05.2024	O.TUNCEL	
27.05.2024	MUSTAFAOGLU	
27.05.2024	H.YÖKSEL	



Parça Adı : **ALM. YAĞ TANKI (400x480x400)(60L.)**
Part Name :
Parça No :
Part Number : **B03312**

Date	Rev.	Modification	Drafter	Check	Approval

Ağırlık :
Weight :
Dosya No :
File Number :
Resim No :
Drawing Number :
Adet :
Quantity :