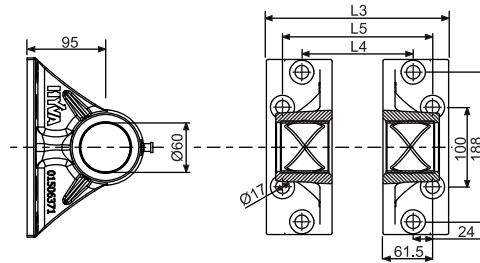
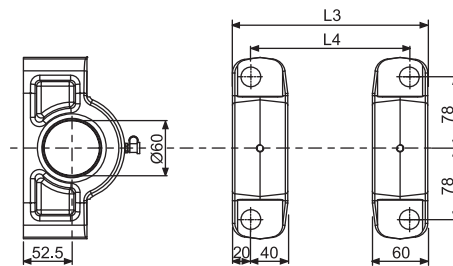


Chassis bracket for front end cylinder type FC/FE 110 - 191


Cylinder Type	L3 (mm)	L4 (mm)	L5 (mm)
110	328	240	288
118	345	257	305
129 / 137 / 149	366	278	326
157 / 169	410	322	370
179 / 191	454	366	414

Bracket Type	Part number	Mass (Kg)	Max. allowed thrust (kN)	Part no. Replacement bush
Greased version	01506371	4.4	335	01794020

Chassis bracket for front end cylinder type FC/FE 110 - 191


Cylinder Type	L3 (mm)	L4 (mm)
110	284	244
118	301	261
129 / 137 / 147	322	282
157 / 169	366	326
179 / 191	410	370

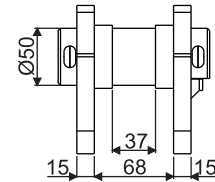
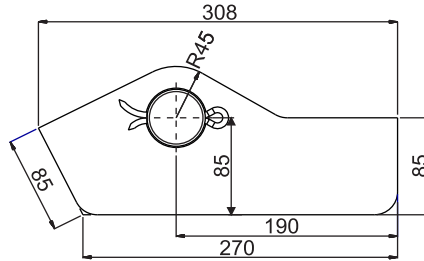
Bracket Type	Part number	Mass (Kg)	Max. allowed thrust (kN)	Part no. Replacement bush
Greased version	01506166	4.6	335	01794019

General information
For all chassis brackets use:

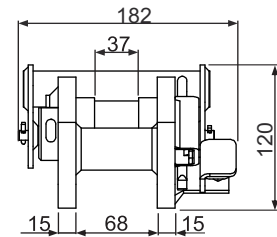
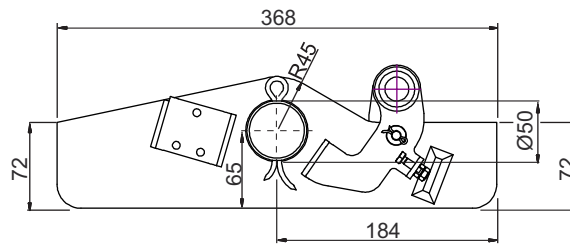
- Bolts M16x1.5 Property Class 8.8 or higher
- Self-locking nuts M16 Property Class 8 or higher

Note:

- Brackets are painted black (RAL9005 / gloss 25%)
- Weight can vary as per casting process
- Greased versions includes M8x1 grease nipple
- For mounting, see instructions CYL-0030, CYL-0031, CYL-0033, CYL-0036 or CYL-0037
- For bush replacement, see instruction CYL-0040

Chassis bracket for front end cylinder type FSE/EF 110-191


Bracket Type	Part number	Mass (Kg)	Max. allowed thrust (kN)	Part no. Replacement Pin
Welded chassis bracket	01506206	8.9	295	01506776

Chassis bracket for front end cylinder type FSE/EF 110-191


Bracket Type	Part number	Mass (Kg)	Max. allowed thrust (kN)	Part no. Replacement Pin
Welded chassis bracket	5629000689	10.4	295	56274147

General information
For all chassis brackets use:

- Bolts M16x1.5 Property Class 8.8 or higher
- Self-locking nuts M16 Property Class 8 or higher

Note:

- Brackets are painted black (RAL9005 / gloss 25%)
- Weight can vary as per casting process
- Greased versions includes M8x1 grease nipple
- For mounting, see instructions CYL-0030, CYL-0031, CYL-0033, CYL-0036 or CYL-0037
- For bush replacement, see instruction CYL-0040