

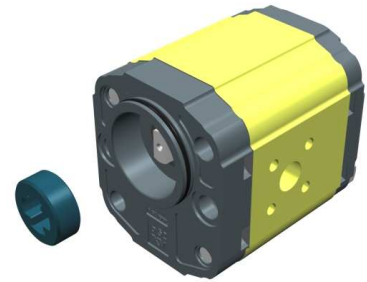
# unidirectional pump - series XV

# XV-2P

STANDARD GERMAN "BH" TYPE PUMP  
 ø52 BODY-SHAPED FLANGE - MILLED SHANK

**X 2 P 51 32 C S R A**

Series	X	series XV
Group	2	group 2
Category	P	unidirectional pump
Displacement	51	17
Flange	32	Ø52 BH GERMAN STANDARDIZED right rotation (with OR)
Shaft	C	CF001 - Milled shank ø15 - thk.8 ("BH" Standard German)
Body	IN	inlet - Ø40 a 45° Ø20 M6
	OUT	outlet - Ø35 a 45° Ø15 M6
Cover	A	standard



XP216

Technical data table

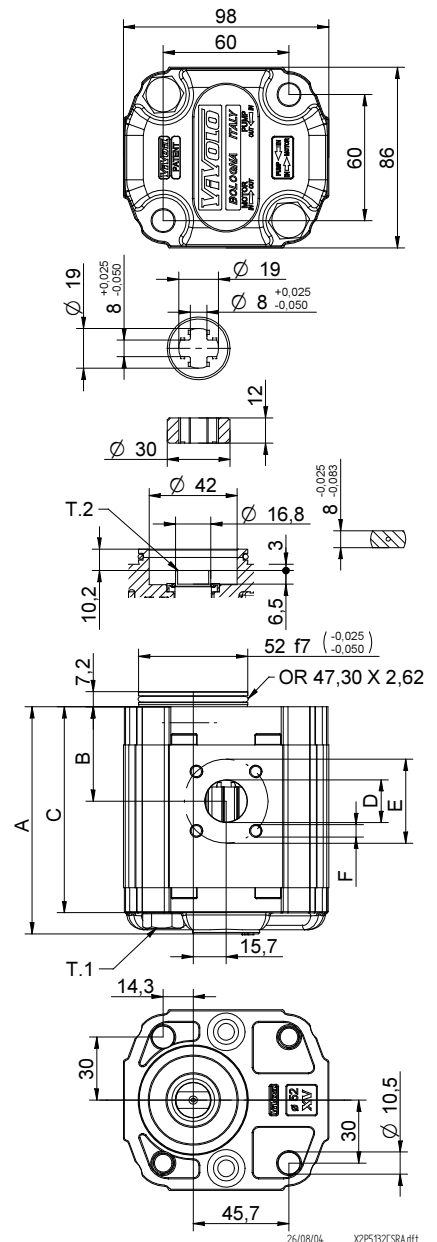
TYPE	Displacement cm3/rev	Max. Pressure		CODE	
		P1 bar	P3 bar	Left rotation	Right rotation
XV-2P/04	4,20	260	300	X 2 P 41 31 C S R A	X 2 P 41 32 C S R A
XV-2P/06	6,00	260	300	X 2 P 43 31 C S R A	X 2 P 43 32 C S R A
XV-2P/09	8,40	260	300	X 2 P 45 31 C S R A	X 2 P 45 32 C S R A
XV-2P/11	10,80	260	300	X 2 P 47 31 C S R A	X 2 P 47 32 C S R A
XV-2P/14	14,40	250	290	X 2 P 49 31 C S R A	X 2 P 49 32 C S R A
XV-2P/17	16,80	230	270	X 2 P 51 31 C S R A	X 2 P 51 32 C S R A
XV-2P/19	19,20	210	250	X 2 P 53 31 C S R A	X 2 P 53 32 C S R A
XV-2P/22	22,80	200	240	X 2 P 55 31 C S R A	X 2 P 55 32 C S R A
XV-2P/26	26,20	170	210	X 2 P 57 31 C S R A	X 2 P 57 32 C S R A
XV-2P/30	30,00	160	200	X 2 P 59 31 C S S A	X 2 P 59 32 C S S A
XV-2P/34	34,20	150	190	X 2 P 61 31 C S S A	X 2 P 61 32 C S S A
XV-2P/40	39,60	140	180	X 2 P 63 31 C S S A	X 2 P 63 32 C S S A

P1) Max. working pressure - P3) Max. peak pressure

For heavy-duty applications, it is recommended to check the admissible torque of the shaft

Dimensions table

TYPE	Weight kg	A	B	C	D	E	F	D	E	F
		mm	mm	mm	IN			OUT		
XV-2P/04	2,100	87,2	38,6	77,2	ø20	40	M6x1	ø15	35	M6x1
XV-2P/06	2,200	90,2	38,6	80,2	ø20	40	M6x2	ø15	35	M6x1
XV-2P/09	2,300	94,2	40,6	84,2	ø20	40	M6x3	ø15	35	M6x1
XV-2P/11	2,400	98,2	45,0	88,2	ø20	40	M6x4	ø15	35	M6x1
XV-2P/14	2,600	104,2	45,0	94,2	ø20	40	M6x5	ø15	35	M6x1
XV-2P/17	2,700	108,2	45,0	98,2	ø20	40	M6x6	ø15	35	M6x1
XV-2P/19	2,800	112,2	45,0	102,2	ø20	40	M6x7	ø15	35	M6x1
XV-2P/22	2,950	118,2	52,5	108,2	ø20	40	M6x8	ø15	35	M6x1
XV-2P/26	3,050	122,2	52,5	112,2	ø20	40	M6x9	ø15	35	M6x1
XV-2P/30	3,300	130,2	60,7	120,2	ø20	40	M6x10	ø20	40	M6x1
XV-2P/34	3,500	137,2	60,7	127,2	ø20	40	M6x11	ø20	40	M6x1
XV-2P/40	3,700	146,2	60,7	136,2	ø20	40	M6x12	ø20	40	M6x1



T.1 = 54÷58.9 [Nm] - screw tightening torque M10

T.2 = 60.5 [Nm] - admissible shaft torque (N.B. When choosing a shaft, always check the admissible torque).