

**MONOSTABILE - BISTABILE - TRISTABILE**  
*MONOSTABLE - BISTABLE - TRISTABLE*

CODICE DI ORDINAZIONE / ORDERING CODE

**400PM X X A X X X**

SEZIONE PRINCIPALE TIPO DI BLOCCO DELLA LEVA

*MAIN SECTION - LEVER STOP TYPE*

**1** = MONOSTABILE / *MONOSTABLE*

**2** = BISTABILE / *BISTABLE*

**3** = TRISTABILE / *TRISTABLE*

USCITA ATTACCHI PNEUMATICI SEZIONE PRINCIPALE O SECONDARIE

*PNEUMATIC PORTS - MAIN OR SECONDARY SECTIONS*

**0** = CON ATTACCHI AUTOMATICI (TUBO Ø 6) / *RAPID T6 (LOWER)*

**3** = M10x1 (LATERALE) / *M10x1 (SIDE)*

ATTACCHI ARIA / *AIR PORTS*

**B** = INFERIORI / *LOWER*

**L** = LATERALI / *SIDE*

**A** = CURVA STANDARD / *STANDARD CURVE*

TIPO DI VERSIONE DI UNA O PIÙ SEZIONI SECONDARIE

*TYPE OF ONE OR MORE SECONDARY SECTIONS:*

**0** = SOLO SEZIONE PRINCIPALE / *MAIN SECTION ONLY*

**1** = UN COMANDO PTO / *ONE PTO CONTROL*

**2** = UN COMANDO PTO + UNO AUSILIARE / *ONE PTO CONTR. + ONE AUXILIARY CONTR.*

**3** = UN COMANDO PTO + DUE AUSILIARI / *ONE PTO CONTR. + TWO AUXILIARY CONTR.*

**6** = UN COMANDO PUSH-PULL / *ONE PUSH-PULL CONTROL*

**7** = UN COMANDO PTO + UNO PUSH-PULL MONOSTABILE

*ONE PTO CONTROL + ONE PUSH-PULL MONOSTABLE CONTROL*

TIPO DI SEZIONE / *SECTION TYPE*

**A** = SOLO SEZIONE PRINCIPALE / *MAIN SECTION ONLY*

**B** = SEZIONE PRINCIPALE + SECONDARIE / *MAIN + SECONDARY SECTIONS*

**C** = SOLO SEZIONE AUSILIARE / *AUXILIARY SECTION ONLY*

COMANDO PNEUMATICO / *PNEUMATIC CONTROL*



6

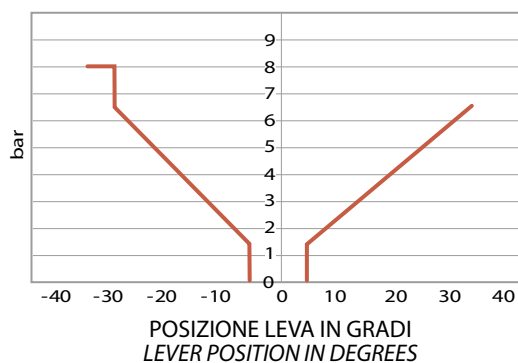
### CARATTERISTICHE TECNICHE TECHNICAL SPECIFICATIONS

Fluido utilizzato <i>Working medium</i>	aria / <i>air</i>
Pressione di esercizio <i>Working pressure</i>	max 10 bar min 5 bar
Temperatura di impiego <i>Operative temperature</i>	- 30° + 80°C
Passaggio nominale <i>Nominal diameter</i>	Ø 4

- Distributore pneumatico per comando proporzionale salita e discesa.
- *Pneumatic distributor for progressive tipping and lowering control.*

### DIAGRAMMA / *DIAGRAM*

A = CURVA STANDARD / *STANDARD CURVE*



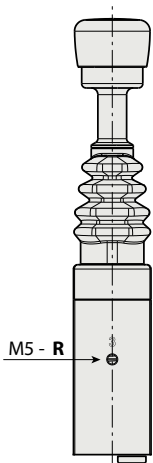
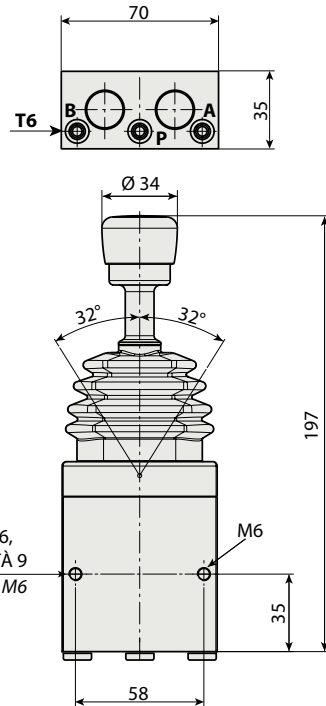
CARATTERISTICA CON PRESSIONE DI ALIMENTAZIONE = 10 bar  
*DIAGRAM REFERRED TO SUPPLY PRESSURE = 10 bar*

MONOSTABILE - BISTABILE - TRISTABILE  
MONOSTABLE - BISTABLE - TRISTABLE

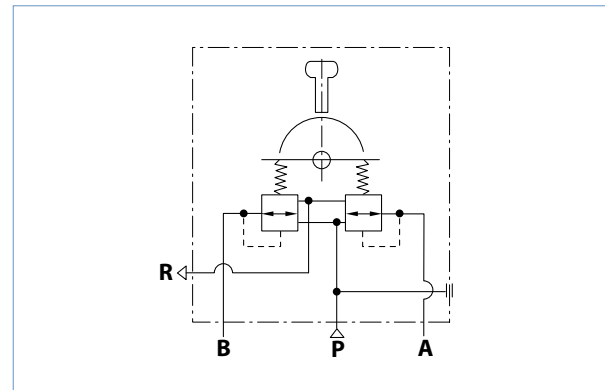
VERSIONE ATTACCHI INFERIORI - RAPID T6  
LOWER PORTS VERSION - RAPID T6

ATTACCHI ARIA / AIR PORTS

- P** Alimentazione (IN) Ø 6 / Compressed air supply
- B** Abbassamento cassone (LOW) Ø 6 / Control lowering
- A** Sollevamento cassone (TIP) Ø 6 / Control tipping
- R** Scarico (EX) M5 / Free exhaust



N° 2 FORI M6,  
PROFONDITÀ 9  
No. 2 HOLES M6  
DEPTH 9



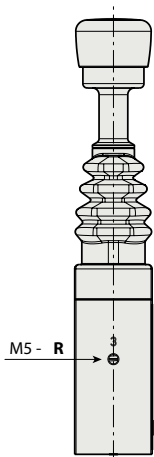
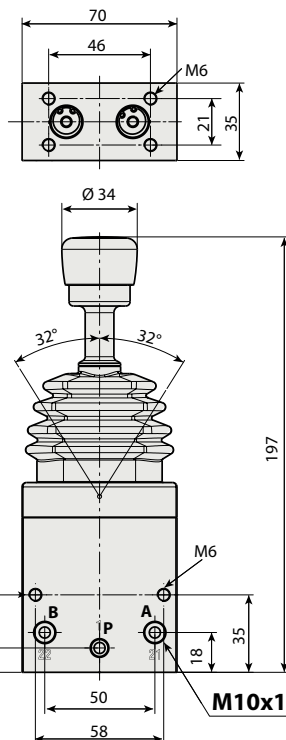
Mod. PM con attacchi inferiori  
PM model with lower ports

6

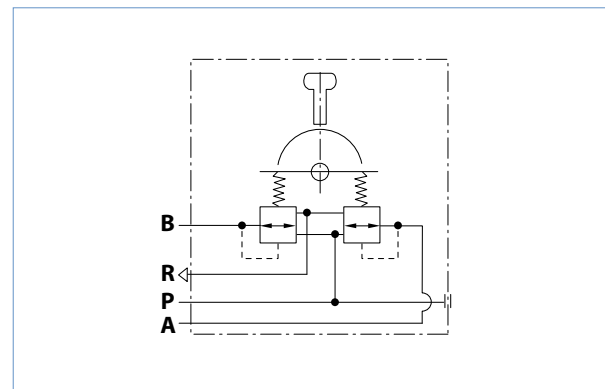
VERSIONE ATTACCHI LATERALI - M10x1 / SIDE PORTS VERSION - M10x1

ATTACCHI ARIA / AIR PORTS

- P** Alimentazione (IN) Ø 6 / Compressed air supply
- B** Abbassamento cassone (LOW) Ø 6 / Control lowering
- A** Sollevamento cassone (TIP) Ø 6 / Control tipping
- R** Scarico (EX) M5 / Free exhaust



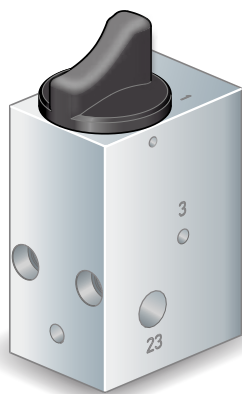
N° 2 FORI M6,  
PROFONDITÀ 9  
No. 2 HOLES M6  
DEPTH 9



Mod. PM con attacchi laterali  
PM model with side ports

### SEZIONI AUSILIARIE PER COMANDO PNEUMATICO PM AUXILIARY SECTIONS FOR PM PNEUMATIC CONTROL

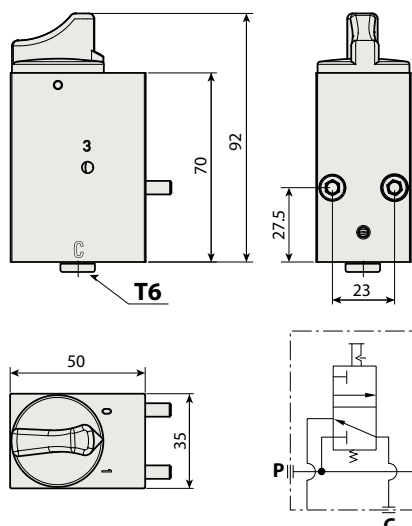
6



#### KIT COMANDO PTO, VERSIONE ATTACCHI INFERIORI - RAPIDO T6

PTO CONTROL KIT,  
LOWER PORTS VERSION - RAPID T6

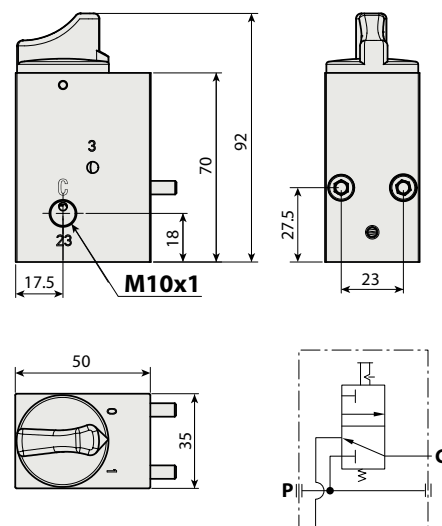
CODICE / CODE **400PM30132B**



#### KIT COMANDO PTO, VERSIONE ATTACCHI LATERALI - M10x1

PTO CONTROL KIT,  
SIDE PORTS VERSION - M10x1

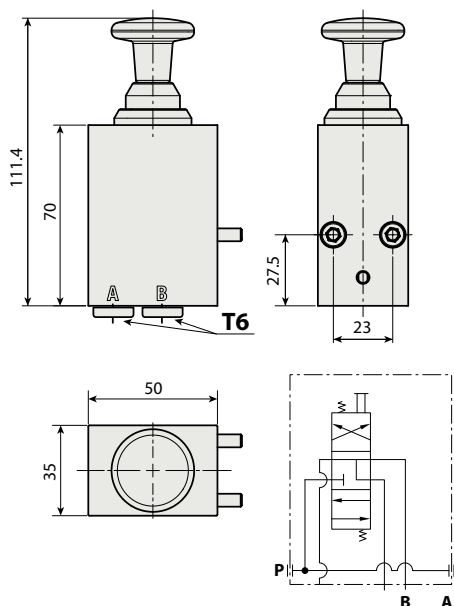
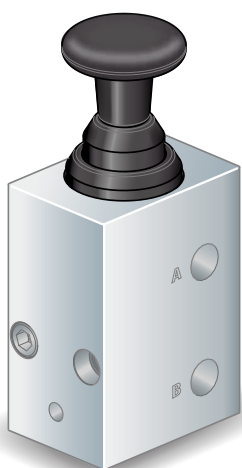
CODICE / CODE **400PM30132L**



#### KIT COMANDO PUSH-PULL MONOSTABILE, VERSIONE ATTACCHI INFERIORI - RAPIDO T6

MONOSTABLE PUSH-PULL CONTROL KIT,  
LOWER PORTS VERSION - RAPID T6

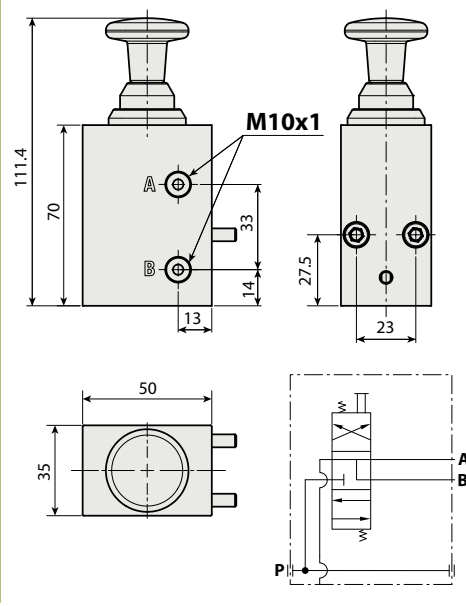
CODICE / CODE **400PM30631B**



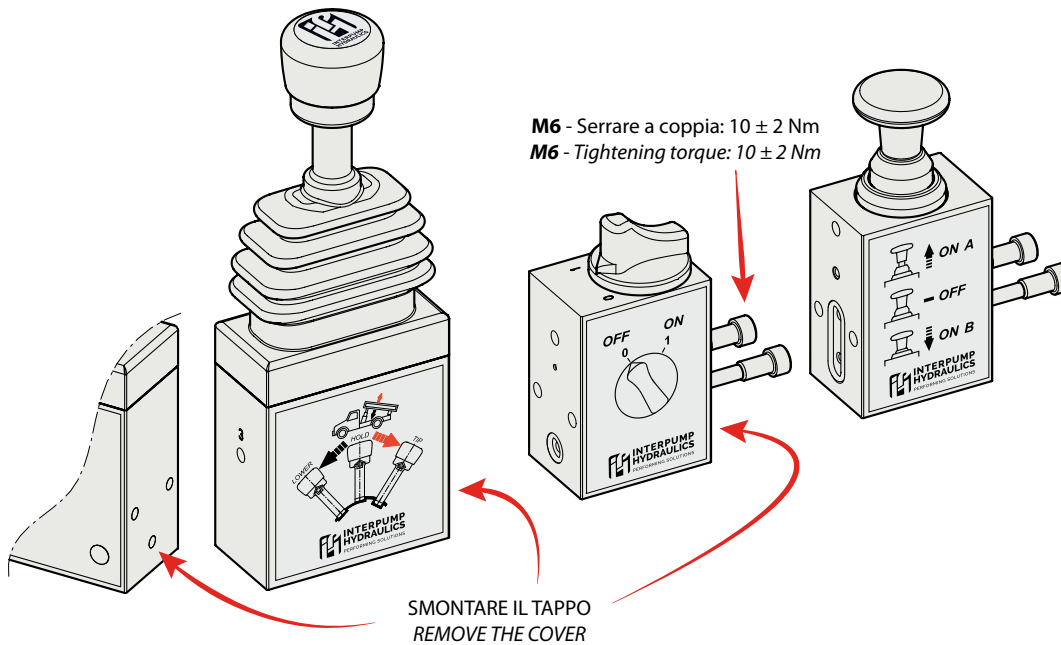
#### KIT COMANDO PUSH-PULL MONOSTABILE, VERSIONE ATTACCHI LATERALI - M10x1

MONOSTABLE PUSH-PULL CONTROL KIT,  
SIDE PORTS VERSION - M10x1

CODICE / CODE **400PM30631L**



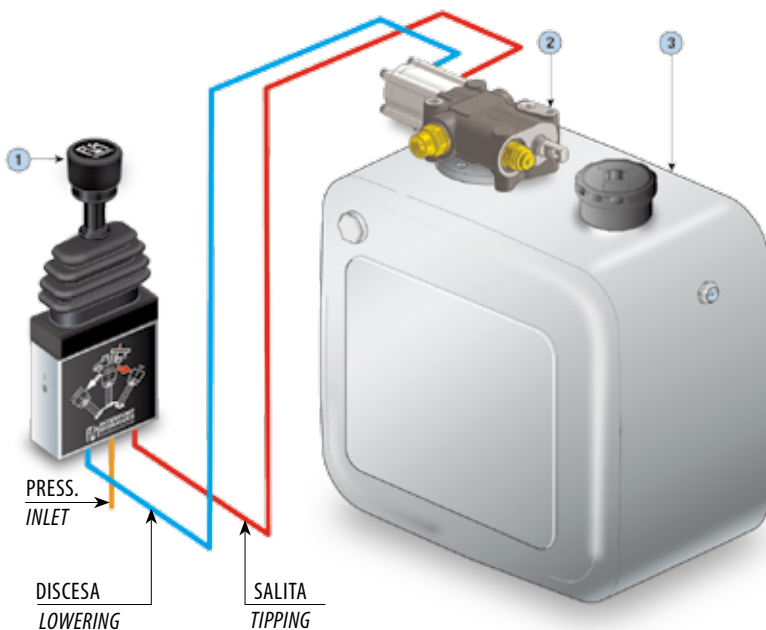
ISTRUZIONI DI MONTAGGIO DELLE SEZIONI AGGIUNTIVE  
MOUNTING INSTRUCTIONS FOR AUXILIARY SECTIONS



6

ESEMPIO SCHEMA DI MONTAGGIO / EXAMPLE OF HOOK-UP

ESEMPIO DI MONTAGGIO / EXAMPLE OF MOUNTING



1 | COMANDO PNEUMATICO  
PNEUMATIC CONTROL

2 | DISTRIBUTORE  
DISTRIBUTOR

3 | SERBATOIO OLIO  
OIL TANK