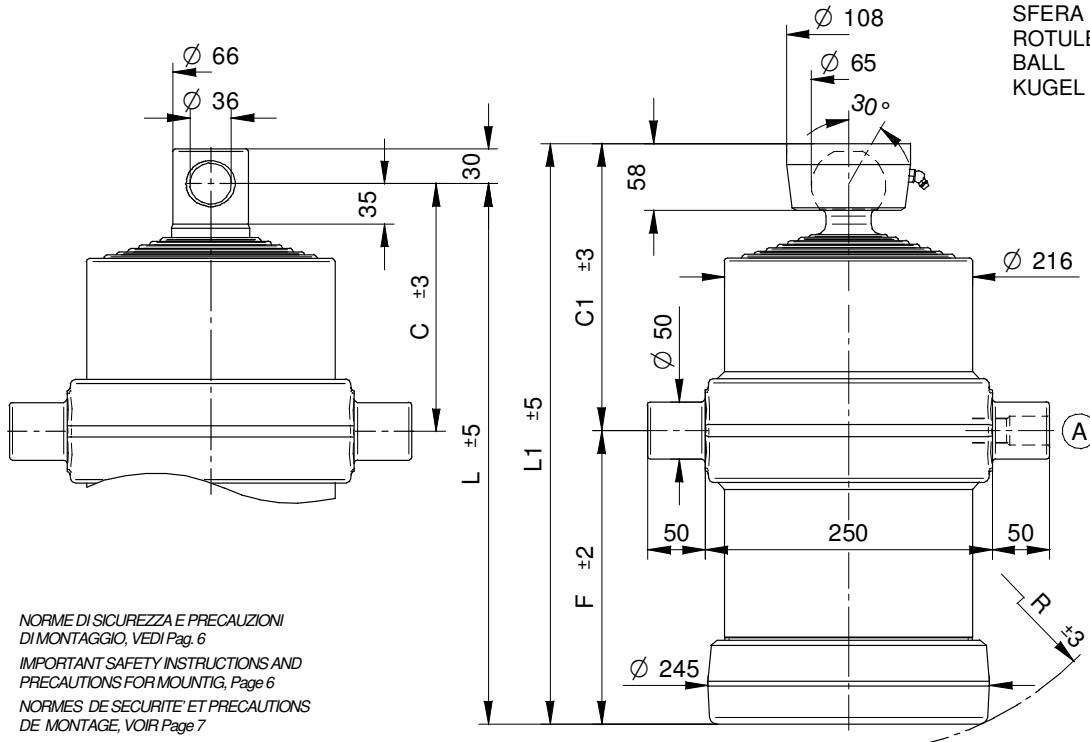




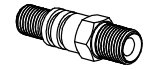
**CILINDRI TELESCOPICI CON 7 SFILATE  
TELESCOPIC CYLINDERS WITH 7 EXTENSIONS**

**VÉRINS TELESCOPIQUES AVEC 7 EXPANSIONS  
TELESKOPZYLINDER MIT 7 STUFEN**



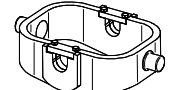
**TYPE S :**  
SFERA  
ROTULE  
BALL  
KUGEL

**STANDARD**

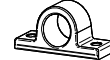


(A) 26100000 3/4 gas

**OPTIONAL**

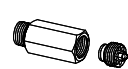
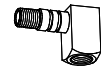


CULLA7

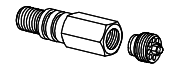


SUP050

SUP050-A



26320000 27230000



71780000 1/2 Gas  
71560000 3/4 Gas



CH065-2782

NORME DI SICUREZZA E PRECAUZIONI  
DI MONTAGGIO, VEDI Page 6  
IMPORTANT SAFETY INSTRUCTIONS AND  
PRECAUTIONS FOR MOUNTING, Page 6  
NORMES DE SECURITE' ET PRECAUTIONS  
DE MONTAGE, VOIR Page 7  
SICHERHEITSBESTIMMUNGEN UND  
VORSICHTSMAßNAHMEN FÜR DEN EINBAU, Page 7

**KIT GUARNIZIONI, SEALS KIT, KIT DE JOINTS, DICHTUNGSSATZ : SGS068-187**

**PESO TOT. RIBALTABILE 22 Ton. a 180 Bar  
POIDS TOT. BASCULABLE 22 Ton. à 180 Bar**

**TOTAL WEIGHT TIP-UP 22 Ton. 180 Bar  
GESAMTGEWICHT ANHÄNGER 22 Ton. 180 Bar**

TIPO TYPE TYPE TYP	DISEGNO - DRAWING DESSIN - ZEICHNUNG	CORSO - STROKE COURSE - HUB	Ø SFILATE mm Ø EXPANSIONS mm Ø EXTENSIONS mm Ø STUFEN mm								DIMENSIONI CILINDRO DIMENSIONS VÉRIN CYLINDER DIMENSIONS ZYLINDER ABMESSUNGEN						L. sfilata - L. extension L. expansion - L. stufen	Peso - Kg - Weight Poids - Kg - Gewicht		Volume olio Lt. Amount of oil Lt. Volume huile Lt. Ölinhalt Lt.		
			68 TON. 6,5	88 TON. 10,9	107 TON. 16,1	126 TON. 22,4	145 TON. 29,7	165 TON. 38,4	187 TON. 49,4	210 TON. 62,3	236 TON. 78,5	C	C <sup>1</sup>	F	L	L <sup>1</sup>		R	F		S	
7050	14020	1665	●	●	●	●	●	●	●				215	250	195	410	445	230	320	100	102	23
7051	14021	1770	●	●	●	●	●	●	●				215	250	210	425	460	244	335	104	106	24
7052	14022	2045	●	●	●	●	●	●	●				215	250	255	470	505	283	380	114	116	29
7053	14023	2535	●	●	●	●	●	●	●				215	250	325	540	575	348	450	130	132	35
7054	14024	2860	●	●	●	●	●	●	●				215	250	375	590	625	395	500	142	144	40
7055	14025	3350	●	●	●	●	●	●	●				215	250	445	660	695	462	570	158	160	47
7057	14027	2325	●	●	●	●	●	●	●				215	250	295	510	545	318	420	119	121	32
7058	14028	4160	●	●	●	●	●	●	●				215	250	575	790	825	585	700	178	180	62

**PRESSIONE MAX. DI ESERCIZIO 220 BAR - PRESSION MAX. DE SERVICE 220 BAR  
WORKING MAX. PRESSURE 220 BAR - MAX. BETRIEBSDRUCK 220 BAR**

CARATTERISTICHE TECNICHE DATE A TITOLO PURAMENTE INDICATIVO E MODIFICABILI SENZA PREAVVISO - THESE TECHNICAL SPECIFICATIONS ARE ONLY APPROXIMATE VALUES AND MAY BE CHANGED WITHOUT ANY PREVIOUS NOTICE  
CARACTERISTIQUES TECHNIQUES DONNÉES A TITRE PUREMENT INDICATIF ET MODIFIABLES SANS PREAVIS - DIESE TECHNISHEN DATEN GELTEN NUR ALS RICHTWERTE UND KÖNNEN OHNE VORANMELDUNG GEÄNDERT WERDEN