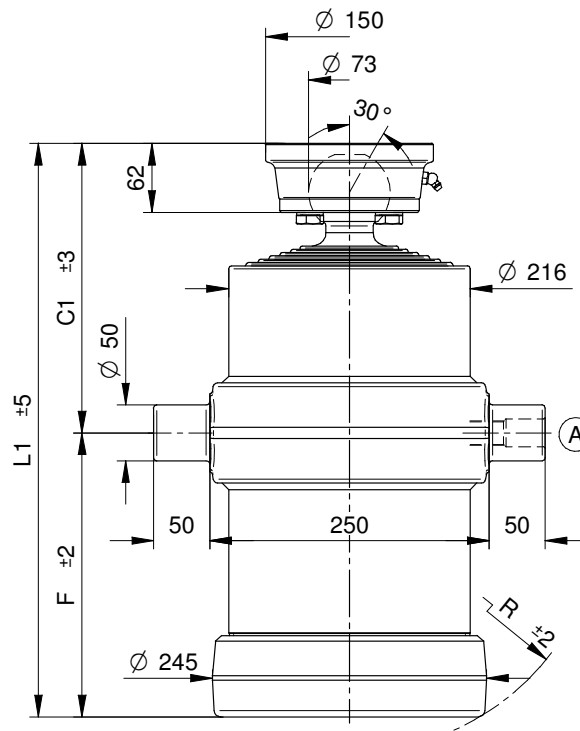
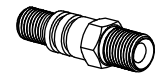
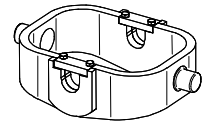


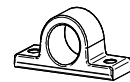
**CILINDRI TELESCOPICI CON 6 SFILATE  
TELESCOPIC CYLINDERS WITH 6 EXTENSIONS**
**VÉRINS TELESCOPIQUES AVEC 6 EXPANSIONS  
TELESKOPZYLINDER MIT 6 STUFEN**

**TYPE S :**  
 SFERA  
 ROTULE  
 BALL  
 KUGEL

**STANDARD**


(A) 26100000 3/4 gas

**OPTIONAL**


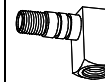
CULLA7



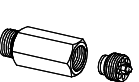
SUP050



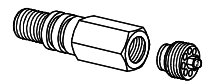
SUP050-A



26320000



27230000



71780000 1/2 Gas

71560000 3/4 Gas

NORME DI SICUREZZA E PRECAUZIONI  
DI MONTAGGIO, VEDI Pag. 6  
 IMPORTANT SAFETY INSTRUCTIONS AND  
PRECAUTIONS FOR MOUNTING, Page 6  
 NORMES DE SECURITE ET PRECAUTIONS  
DE MONTAGE, VOIR Page 7  
 SICHERHEITSBESTIMMUNGEN UND  
VORSICHTSMAßNAHMEN FÜR DEN EINBAU, Page 7

**KIT GUARNIZIONI, SEALS KIT, KIT DE JOINTS, DICHTUNGSSATZ : SGS088-187**
**PESO TOT. RIBALTABILE 25 Ton. a 180 Bar  
POIDS TOT. BASCULABLE 25 Ton. à 180 Bar**
**TOTAL WEIGHT TIP-UP 25 Ton. 180 Bar  
GESAMTGEWICHT ANHÄNGER 25 Ton. 180 Bar**

TIPO TYPE TYPE TYP	DISEGNO - DRAWING DESSIN - ZEICHNUNG	CORSO - STROKE COURSE - HUB	Ø SFILATE mm Ø EXPANSIONS mm Ø EXTENSIONS mm Ø STUFEN mm							DIMENSIONI CILINDRO DIMENSIONS VÉRIN CYLINDER DIMENSIONS ZYLINDER ABMESSUNGEN						L. sfilata - L. extension L. expansion - L. stufen	Peso - Kg - Weight Poids - Kg - Gewicht	Volume olio Lt. Amount of oil Lt. Volume huile Lt. Ölinhalt Lt.		
			68 TON. 6,5	88 TON. 10,9	107 TON. 16,1	126 TON. 22,4	145 TON. 29,7	165 TON. 38,4	187 TON. 49,4	210 TON. 62,3	236 TON. 78,5	C	C'	F	L				L'	R
			F		S															
6050	14040	1415	●	●	●	●	●	●	●	-	260	195	-	455	230	320	-	99	22	
6051	14041	1505	●	●	●	●	●	●	●	-	260	210	-	470	244	335	-	101	23	
6052	14042	1740	●	●	●	●	●	●	●	-	260	255	-	515	283	380	-	110	28	
6053	14043	2160	●	●	●	●	●	●	●	-	260	325	-	585	348	450	-	125	34	
6054	14044	2430	●	●	●	●	●	●	●	-	260	375	-	635	395	500	-	134	38	
6055	14045	2850	●	●	●	●	●	●	●	-	260	445	-	705	462	570	-	148	45	
6056	14046	3265	●	●	●	●	●	●	●	-	260	525	-	785	535	650	-	165	51	
6057	13910	3565	●	●	●	●	●	●	●	-	260	575	-	835	590	700	-	171	56	

**PRESSIONE MAX. DI ESERCIZIO 220 BAR - PRESSION MAX. DE SERVICE 220 BAR  
WORKING MAX. PRESSURE 220 BAR - MAX. BETRIEBSDRUCK 220 BAR**

 CARATTERISTICHE TECNICHE DATE A TITOLO PURAMENTE INDICATIVO E MODIFICABILI SENZA PREAVVISO - THESE TECHNICAL SPECIFICATIONS ARE ONLY APPROXIMATE VALUES AND MAY BE CHANGED WITHOUT ANY PREVIOUS NOTICE  
 CARACTERISTIQUES TECHNIQUES DONNÉES A TITRE PUREMENT INDICATIF ET MODIFIABLES SANS PREAVIS - DIESE TECHNISCHEN DATEN GELTEN NUR ALS RICHTWERTE UND KÖNNEN OHNE VORANMELDUNG GEÄNDERT WERDEN