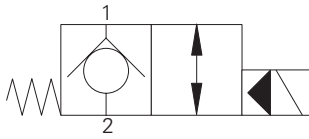


# SV3-10-C / O - Solenoid valve

Poppet type, 2-way, 2-position, Normally open & Normally closed  
45 L/min (12 USgpm) • 210 bar (3000 psi)

A

## SV3-10-C Normally Closed

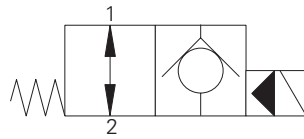


### Operation

In the de-energized position the valve blocks flow from port 2 to 1 and free flow is allowed from port 1 to 2.

When the solenoid is energized the pilot poppet is pulled off the seat allowing the valve to open in both directions.

## SV3-10-O Normally Open



### Operation

In the de-energized position the valve allows free flow in both directions.

When the solenoid is energized the pilot poppet closes the orifice and the valve closes blocking flow from port 2 to 1 while allowing free flow from port 1 to 2.

## Performance data

### Ratings and specifications

Performance data is typical with fluid at 21,8 cSt (105 SUS) and 49°C (120°F)

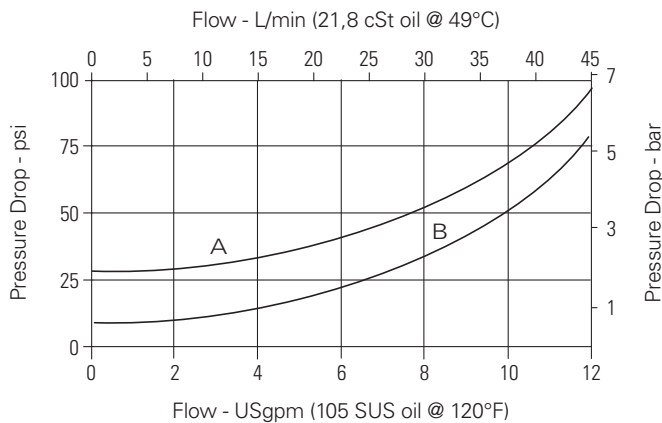
Typical application pressure (all ports)	210 bar (3000 psi)
Rated flow	45 L/min (12 USgpm)
Internal leakage	less than 5 drops/min, max @ 210 bar (3000 psi)
Temperature range	-40° to 120°C (-40° to 248°F)
Cavity	C-10-2
Weight cartridge only	0,4 kg (0.87 lbs)
Fluids	All general purpose hydraulic fluids such as: MIL-H-5606, SAE 10, SAE 20 etc.
Filtration	Cleanliness code 18/16/13
Seal kit	565803 (Buna-N), 566086 (Viton®)

Viton is a registered trademark of E.I. DuPont

## SV3-10-O

### Pressure drop

Cartridge only

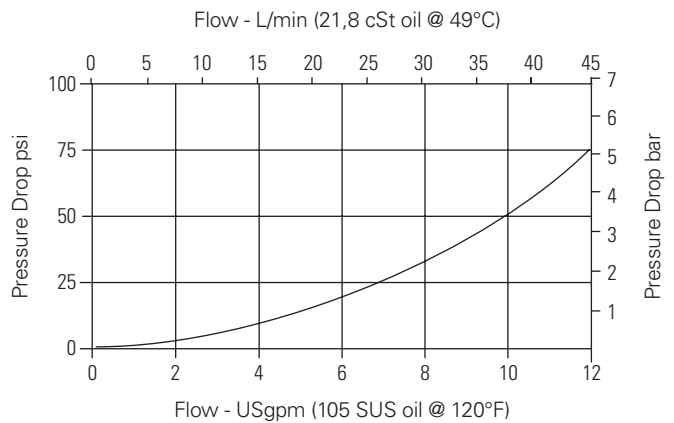


**A** - Port 1 to port 2 de-energized  
**B** - Port 2 to port 1 energized

## SV3-10-C

### Pressure drop

Cartridge only



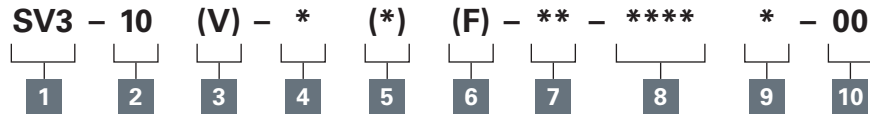
Port 1 to port 2 and port 2 to port 1 de-energized

Where measurements are critical request certified drawings. We reserve the right to change specifications without notice.

# SV3-10-C / O - Solenoid valve

Poppet type, 2-way, 2-position, Normally open & Normally closed  
45 L/min (12 USgpm) • 210 bar (3000 psi)

## Model code



A

### 1 Function

SV3 - Solenoid valve

### 2 Size

10 - 10 size

### 3 Seal material

Blank - Buna-N  
V - Viton®

### 4 Style

C - Normally closed  
O - Normally open

### 5 Manual override option

Blank - No manual override  
M - Knob type  
R - Cable type  
P - Push type  
S - Screw type  
For valve dimensions with manual override option installed see page A-980.

### 6 Filter options

Blank - None  
F - Filter screen

### 7 Port size

Code	Port size	Housing number
0	Cartridge only	
3B	3/8" BSPP	02-175462*
2G	1/4" BSPP	876702
3G	3/8" BSPP	876703
6T	SAE 6	566151*
6H	SAE 6	876700
8H	SAE 8	876701

See section J for housing details.  
\*Light duty housing

### 9 Connector types

Blank - No coil  
G - ISO 4400 DIN 43650  
W - Flying lead  
N - Deutsch (DC only)  
Y - Amp JR (DC only)  
D - Metripack 150 male (DC only)  
J - Metripack 280 male (DC only)  
E - Weather-Pack female  
F - Weather-Pack male  
For coil part numbers and dimensions see section C.

### 8 Voltage rating

00 - No coil  
12D - 12VDC  
24D - 24VDC  
115A - 115VAC  
230A - 230VAC  
12B - 12VDC/w diode\*  
24B - 24VDC/w diode\*  
\*Optional arc suppression diode.

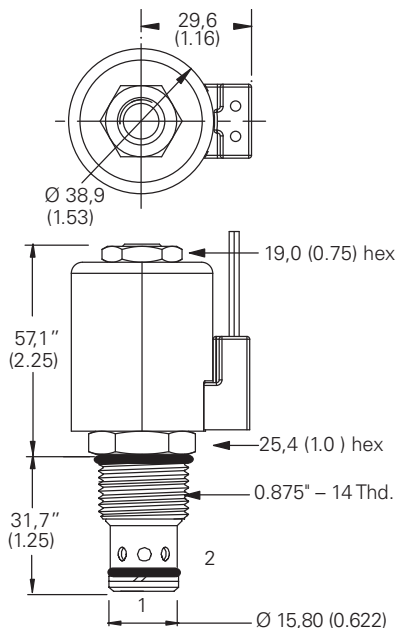
### 10 Special features

00 - None  
(Only required if valve has special features, omitted if "00.")

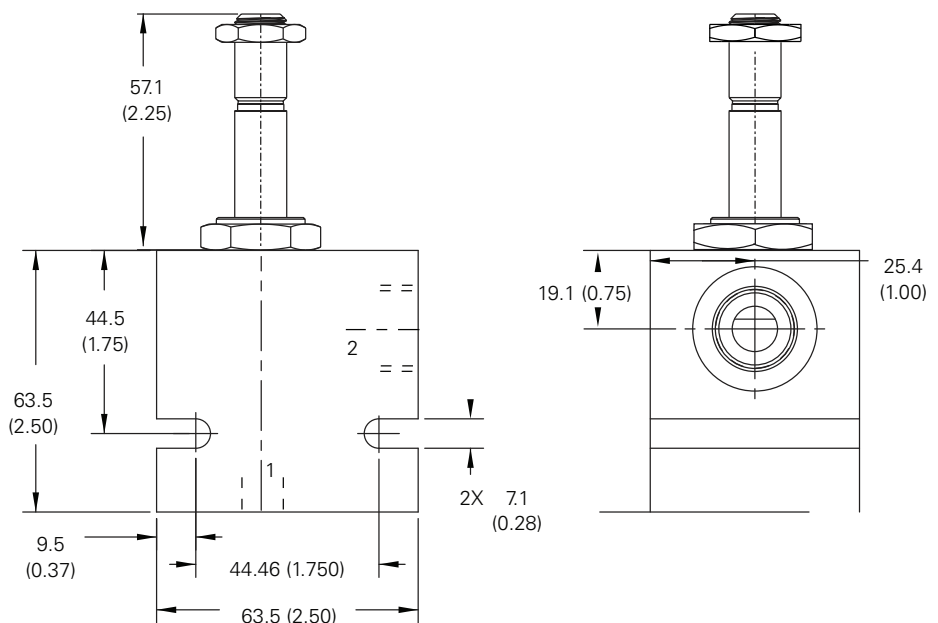
**Note:** Use J series, 23 W coils with this solenoid valve.

## Dimensions - mm (inch)

### Cartridge only



### Installation drawing



Where measurements are critical request certified drawings. We reserve the right to change specifications without notice.